

NEW!

FH ECO-Plug

MORE THAN

20% LIGHTER!

THE LATEST INNOVATION ON THE MARKET!

The sealing plug "Type L" - light version fully complies with the DIN 908/910 regulations. It is exactly interchangeable with the regular sealing plug "Type R" - heavy version. The economic effect and the therewith achieved advantage for the customer results from a novel technique in cold forging sealing plugs without the need for extensive and expensive finishing.

Our specialists are happy to advise you and to answer any further questions you might have.

Custom-made shapes and sizes according to our customers' requirements are possible!

**End-to-end solutions in fastening technology:
Today – and in future!**

UNIQUE ADVANTAGES:

- A variety of drive options complying with DIN 908:
 - Torx
 - Hexagon Socket
 - Twelve Point Socket
- complying with DIN 910:
 - Hexagon Head Screw Plug
- Patent pending
- Cold forged without the need for subsequent machining
- Weight reduction exceeding 20%



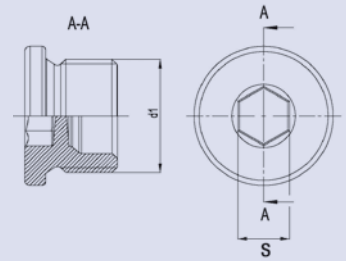
Flaig + Hommel



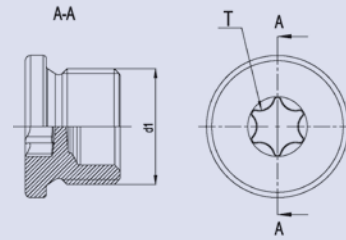
DIN 908-FH Type L (light version)

d1		Hexagon Socket s	Torx T	Twelve Point Socket N
Metric fine thread according to DIN 13 part 5, 6 and 7 respectively	Pipe thread according to DIN ISO 228-1			
M 10 x 1	G 1/8 A	5	T30	N6
M 12 x 1,5	G 1/4 A	6	T40	N8
M 14 x 1,5		6	T45	N8
M 16 x 1,5	G 3/8 A	8	T50	N10
M 18 x 1,5		8	T50	N10
M 20 x 1,5		10	T55	N12
M 22 x 1,5	G 1/2 A	10	T55	N14
M 24 x 1,5		12	T60	N16
M 26 x 1,5		12	T60	N16
M 27 x 2	G 3/4 A	12	T60	N16
M 30 x 1,5/M 30 x 2		17	T80	N18

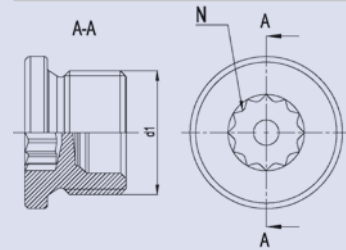
Hexagon Socket s



Torx T



Twelve Point Socket N



DIN 910-FH Type L (light version)

d1		a	d ₃	d ₄	s	m
Metric fine thread according to DIN 13 part 5, 6 and 7 respectively	Pipe thread according to DIN ISO 228-1					
M 10 x 1	G 1/8 A	min. 2	max. 6	max. 6	D12 10	± 1/2 IT 15 6
M 12 x 1,5	G 1/4 A	2	9	8	13 (12)	6
M 14 x 1,5		2	9	10	13	6
M 16 x 1,5	G 3/8 A	2	13	12	17 (16)	6
M 18 x 1,5		2	13	14	17 (16)	8
M 20 x 1,5		2	15	16	19 (18)	8
M 22 x 1,5	G 1/2 A	2	15	16,95	19 (18)	8
M 24 x 1,5		2	15	18	19 (18)	8
M 26 x 1,5		2	18	20	22 (21)	9
M 27 x 2	G 3/4 A	2	20	22	24	10
M 30 x 1,5/M 30 x 2		2	20	23	24	10
		2	20	26	24	10

Hexagon Head Screw Plug

